



Espacio  
**Bertelsmann**

*Dialogue for a better future*







# Contents

1. Espacio Bertelsmann
2. Location
3. Rooms and spaces
  - 3.1. Entrance and reception desk
  - 3.2. Multi-use area
  - 3.3. Private room
  - 3.4. Conference hall
4. Find inspiration
5. Technical provisions
6. Furnishing
7. Floor plans

# 1 Espacio Bertelsmann

*More than a space for events*

The Bertelsmann Space, or Espacio Bertelsmann, was built by the prestigious architect Enric Miralles in 1992 as headquarters of the cultural centre of the Círculo de Lectores book club in Spain. Today, the site is operated by Fundación Bertelsmann and has become firmly established as a space for debate and exchanges of ideas.

Located in the centre of Madrid, Espacio Bertelsmann, the only work by the architect Miralles in the Spanish capital, was awarded the City of Madrid Prize due to its unique personality in 1993. The use of wood as the main material gives the site a sophisticated air and fuses perfectly with the innovative large screen stage and modern audiovisual equipment. This and its great versatility make Espacio Bertelsmann the perfect venue for events of all kinds.



Take a **virtual tour**  
and discover  
everything Espacio  
Bertelsmann has  
to offer!

[↑ go to table of contents](#)





## 2 Location

*In the heart of Madrid*

→ [go to Google Maps](#)

Espacio Bertelsmann is located at 10, Calle de O'Donnell, in the heart of the city of Madrid, a stone's throw from El Retiro park and just five minutes from the iconic Alcalá Gate.



### Metro stations

Príncipe de Vergara  
Ibiza  
Goya  
Retiro



### Bus stops

Príncipe de Vergara  
15 - 146 - 152  
O'Donnell-Narváez  
2 - 28 - N6



### Airport

Less than 20 minutes' drive from Adolfo Suárez Madrid-Barajas Airport



### BiciMAD

61 - Narváez  
98 - Plaza de Felipe II  
97 - Alcalá  
181 - Retiro-Ibiza



### Train station

Ten minutes by car from Puerta de Atocha train station



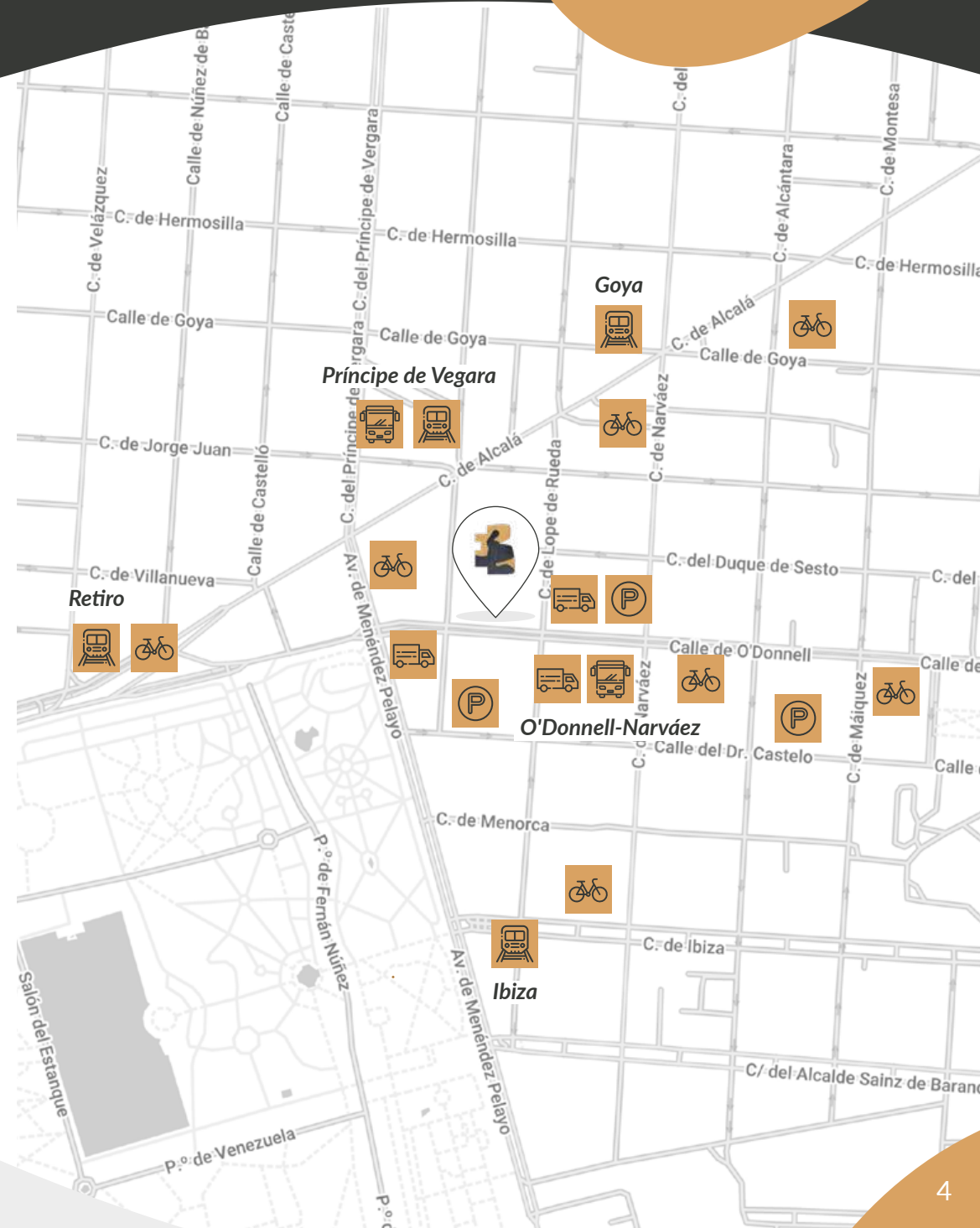
### Car parks

10, Doctor Castelo  
43, Doctor Castelo  
33, O'Donnell



### Loading and unloading

6, O'Donnell  
18, O' Donnell  
22, Lope de Rueda



↑ [go to table of contents](#)

# 3 Rooms and spaces

*Everything you need*

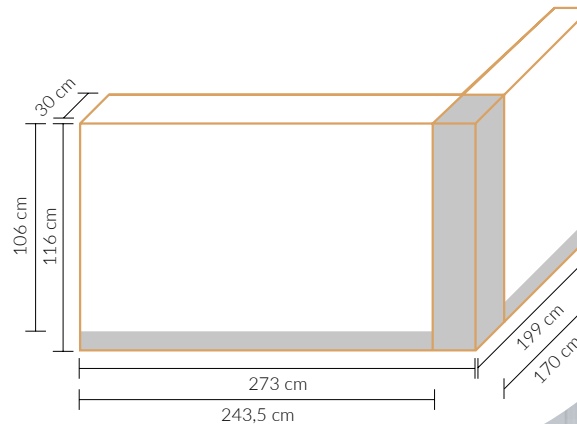
↓ [see floor plans of  
Espacio Bertelsmann](#)

## 3.1. ENTRANCE AND RECEPTION DESK

**ACCESSIBILITY:** Occupying a single floor, Espacio Bertelsmann is a fully accessible venue. There are access ramps both at the entrance and onto the stage in the conference hall. The bathrooms are also adapted for people with reduced mobility.

### Facilities in this area:

- Access ramp
- Two 65-inch screens, perfect for image and video projection
- Wi-Fi Internet connection
- Wardrobes for around one hundred coats, with hangers and numbered tickets
- Reception desk, suitable for delivering badges
- Wall display



# 3 Rooms and spaces

Everything you need

↓ [see floor plans of  
Espacio Bertelsmann](#)

## 3.2. MULTI-USE AREA




This is, without doubt, the most versatile space in Espacio Bertelsmann. Located between the conference hall and the reception desk, the multi-use area is made particularly attractive by its striking central columns and the large mirrors covering the right-hand wall.

Its versatility makes this area ideal for all kinds of events: small meetings, catering, networking, photocalls and much more. The space provides direct access to both the private room and the conference hall.

### Facilities in this area:

- 75-inch smart TV for photo and video projection
- Six 13-inch monitors fitted onto the columns
- Office kitchen for catering
- Accessible toilets

AREA: 87 m2

-  Cocktail events: 100 people
-  Banquets: 20 people
-  "Imperial" table plan: 12 people

↑ [go to table of contents](#)





# 3 Rooms and spaces

*Everything you need*

↓ [see floor plans of](#)  
[Espacio Bertelsmann](#)

## 3.3. PRIVATE ROOM

The private room is ideal as a green room for personalities and speakers and for small meetings. This space has also been used on several occasions for book and record signings.

The room can meet a range of needs according to the type of event. Its modular wall enables the space to be opened up completely to become an extension of the multi-use area for catering.

### Facilities in this area:

- 65-inch screen
- Modular wall panels

AREA: 27 m<sup>2</sup>

- 🍸 Cocktail events: 20 people
- 👑 "Imperial" table plan: 10 people

↑ [go to table of contents](#)



# 3 Rooms and spaces

*Everything you need*

↓ [see floor plans of  
Espacio Bertelsmann](#)

## 3.4. CONFERENCE HALL

The conference hall is the very heart and soul of Espacio Bertelsmann. Over the years, many quality events have taken place in this charming and sophisticated space.

The versatility of this space and the technical equipment installed here mean that a range of different formats can be adopted according to the needs of each user, including the organisation of hybrid or fully digitised events.

### Equipment in the conference hall:

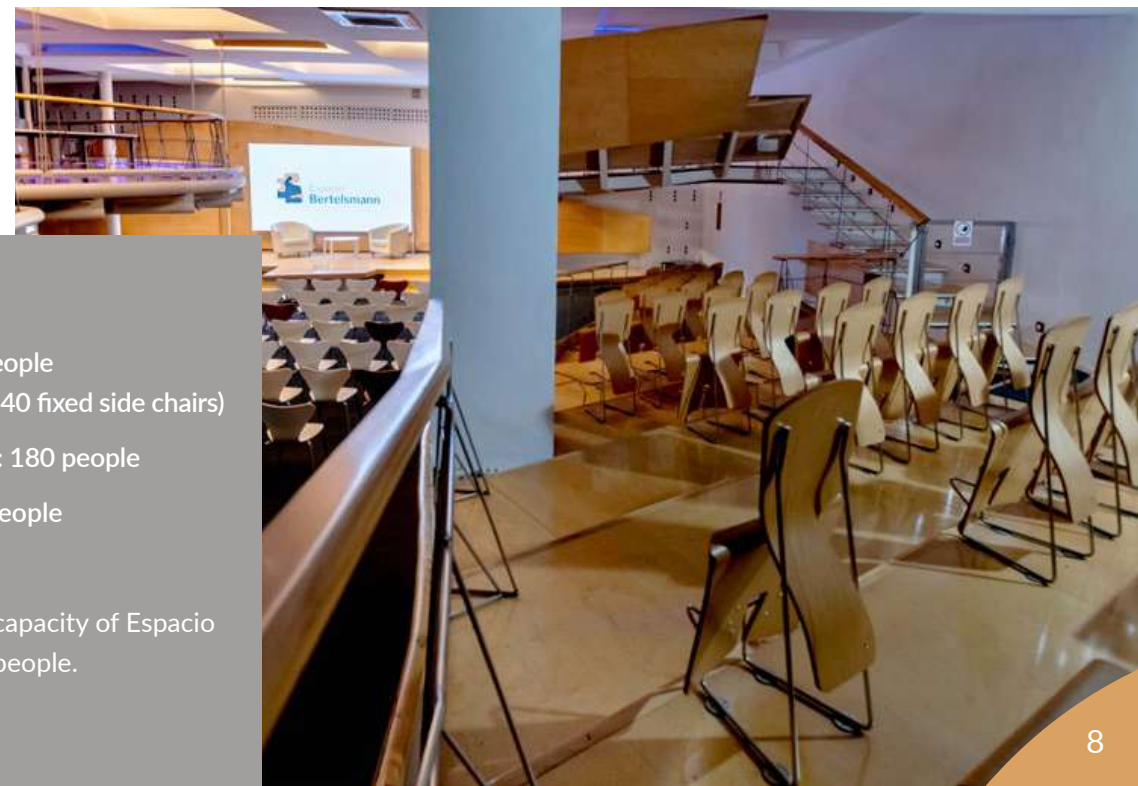
- 3.5x2 m LED screen
- Stage with access ramp
- Furniture for stage and audience
- Removable, customisable lectern
- Two 55-inch support screens
- Technical area for streaming and simultaneous translation
- Toilets

↓ [see full technical provisions](#)

### AREA: 258 m<sup>2</sup>

- 🎭 Theatre: 200 people  
(160 chairs and 40 fixed side chairs)
- 🍸 Cocktail events: 180 people
- 🍽️ Banquets: 80 people

The maximum legal capacity of Espacio Bertelsmann is 200 people.





# 4 Find inspiration

*Everything you can imagine*

Thanks to its structure, Espacio Bertelsmann can be adapted to host a wide range of different events, including:

- Debates
- Conferences
- Training sessions
- Workshops
- Product launches
- Press conferences
- Teambuilding events
- Award ceremonies
- Graduations
- Recording sessions
- Concerts
- Screenings
- Lunches
- Cocktail events



[↑ go to table of contents](#)





# 5 Technical provisions

## Quality equipment

Espacio Bertelsmann provides all the tools necessary to stage quality events. For our clients' convenience, the equipment listed below is included in the rental price.

### Audio:

- 6 Shure over ear microphones
- 2 Shure handheld microphones
- 2 lectern microphones
- Midas M32 console
- DAS Audio equipment, distributed by zones
- Press patch box, 4 outputs

### Video:

- 3.5x2 m LED screen with 1.9 mm pixel pitch, video processor and Novastar J6 switcher
- Six 55- to 75-inch screens, distributed throughout the venue

- Nine 13-inch mini-screens in closed circuit pulgadas en circuito cerrado
- Slideshow presenter
- Roland video switcher

(Screen resolution: 1920x1080)

### Others:

- Adjustable and customisable LED lighting system
- Technical area for audiovisual control, streaming installation and simultaneous translation (2 booths without equipment)
- Wi-Fi connection to Internet





# 6 Furnishing

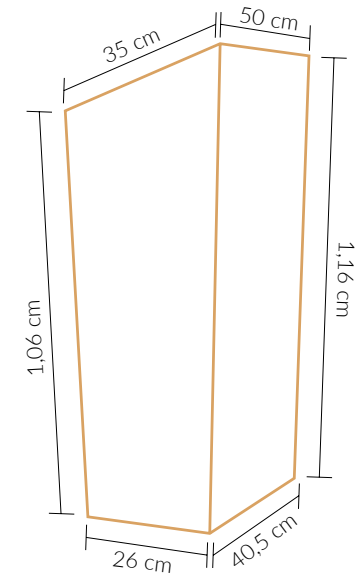
Arrange the furniture available as you wish



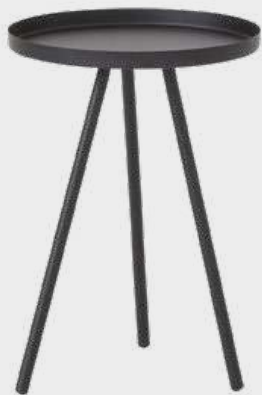
Up to 200 chairs



40 fixed side chairs



Lectern on stage



Support tables (6 black, 2 white)



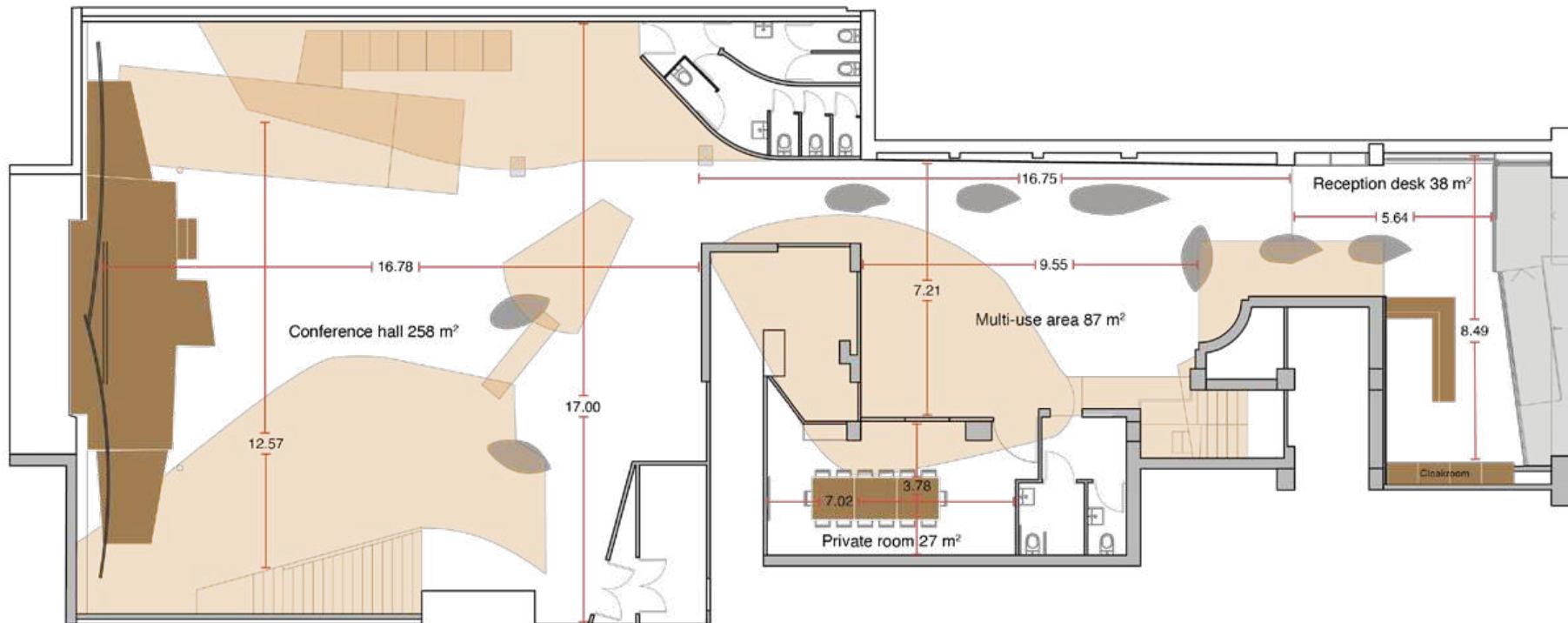
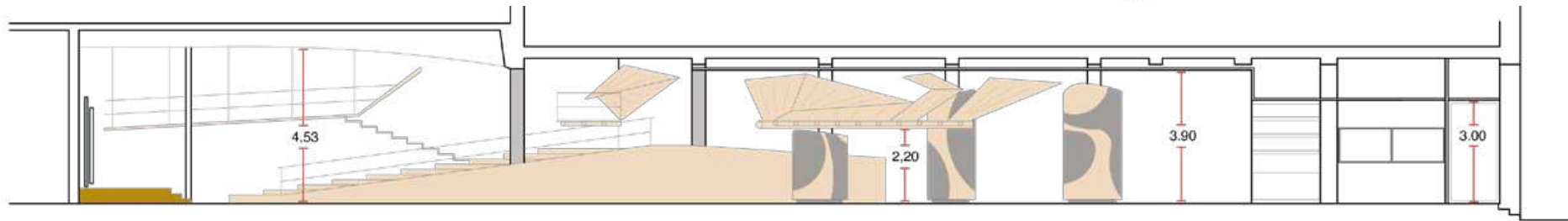
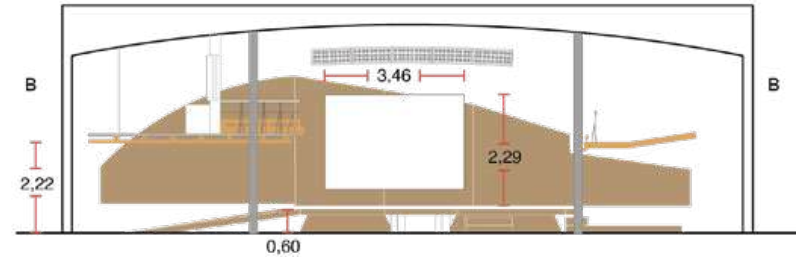
6 stools



6 armchairs

# 7 Floor plans

*Discover Espacio Bertelsmann inch by inch*







**Espacio  
Bertelsmann**

*Dialogue for a better future*

Address: Calle de O'Donnell, 10, 28009 Madrid (Spain)

+34 666 147 449 | +34 661 75 78 03

[info@espaciobertelsmann.es](mailto:info@espaciobertelsmann.es)

[www.espaciobertelsmann.es](http://www.espaciobertelsmann.es)

